

Indicator: Violent Crime

Description: Number of incidents of violent crime per 100,000 people.

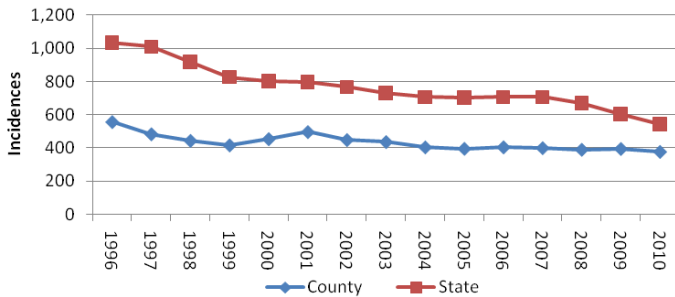
Sources: Florida Department of Law Enforcement—<http://www.fdle.state.fl.us/Content/getdoc/8c4ed844-de81-4551-a10e-7eb31e76def0/UCR-Offense-Data.aspx>

Caveats: Violent Crime includes murder, forcible sex offenses, aggravated assault and robbery. Violent crimes are presented 'per 100,000 people' to reflect changes in the prevalence of violent crime and not just changes in the size of the population. According to local law enforcement officials, the county rate might be lower than that of the state because more people living in Sarasota County are older adults, who traditionally engage in less crime than the population as a whole.

County

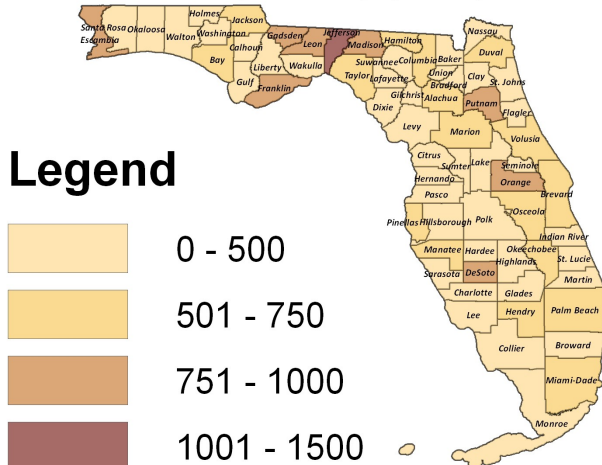
Within County

Violent Crime per 100,000 Population



Year	1996	1997	1998	1999	2000
County	558	484	443	416	454
State	1035	1009	917	827	804
	2001	2002	2003	2004	2005
County	496	448	436	404	395
State	798	768	730	706	702
	2006	2007	2008	2009	2010
County	404	399	389	394	376
State	706	706	670	605	543

Violent Crime Rate Per 100,000 Population By County (2010)



Associated Indicators:

Patterns:



Indicator: Violent Crime

Description: Number of incidents of violent crime per 100,000 people.

Time Series

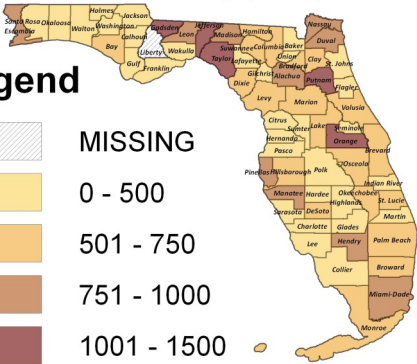
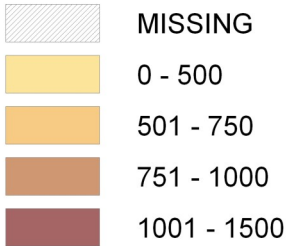
Past

Present

County

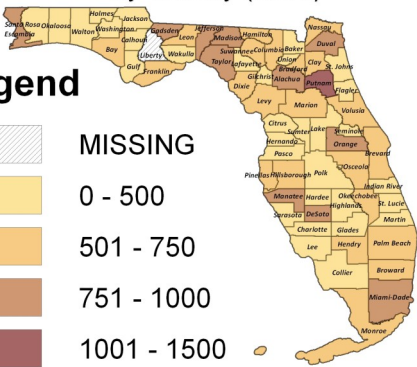
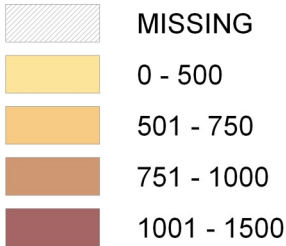
Violent Crime Rate Per 100,000 Population By County (2008)

Legend



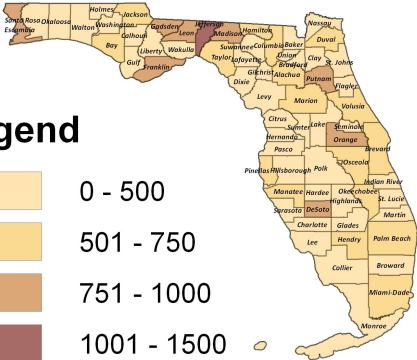
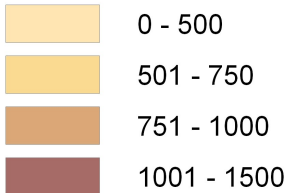
Violent Crime Rate Per 100,000 Population By County (2009)

Legend



Violent Crime Rate Per 100,000 Population By County (2010)

Legend



Within County

