

# Indicator: Daily Fresh Water Consumption

**Description:** Average number of gallons of fresh water used each day per person.

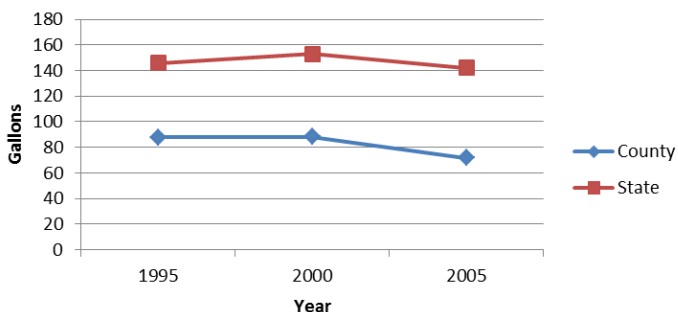
**Sources:** U.S. Geological Survey (available online)-Estimated Use of Water in the US County Level Data 1995,2000,2005—<http://water.usgs.gov/watuse/data/2005/index.html>

**Caveats:** Fresh water consumption is calculated by dividing the total withdrawal of public supply fresh water (millions of gallons per day) for the county by the total population of the county. Fresh water comes from either surface water such as lakes and rivers or from underground aquifers. The amount of fresh water is presented 'per capita' so that changes reflect the amount of water used and not just changes in the size of the population.

## County

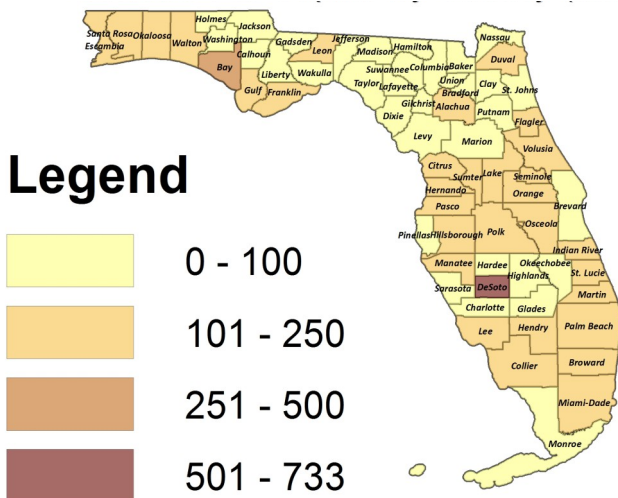
## Within County

Average Daily Fresh Water Consumption Per Person



Year	<u>1995</u>	<u>2000</u>	<u>2005</u>
County	88	88	72
State	146	153	142

Average Daily Fresh Water Consumption Per Person By County (2005)



Associated Indicators:

Patterns:



# Indicator: Daily Fresh Water Consumption

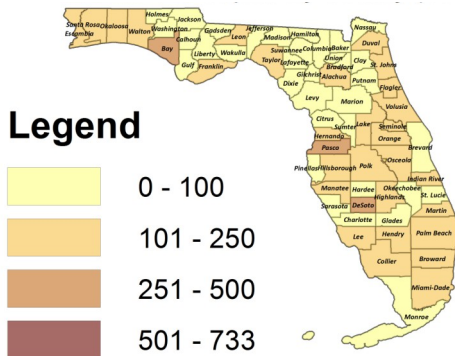
Description: Average number of gallons of fresh water used each day per person.

## Time Series

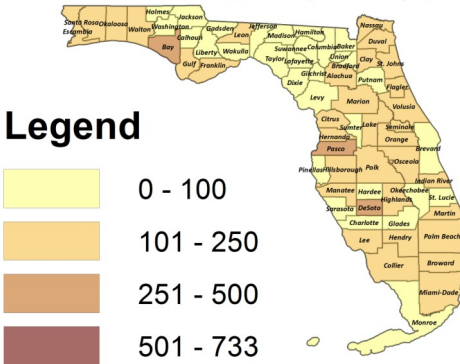
### County

### Within County

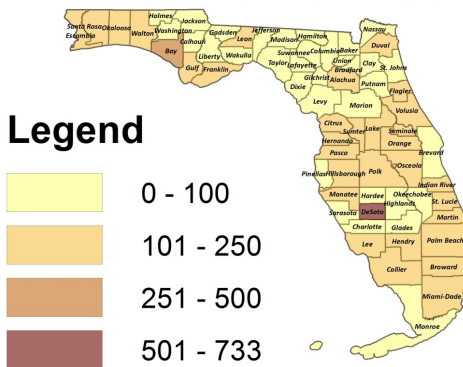
Average Daily Fresh Water Consumption Per Person By County (1995)



Average Daily Fresh Water Consumption Per Person By County (2000)



Average Daily Fresh Water Consumption Per Person By County (2005)



Past

Present